



# SWITCH PRIME

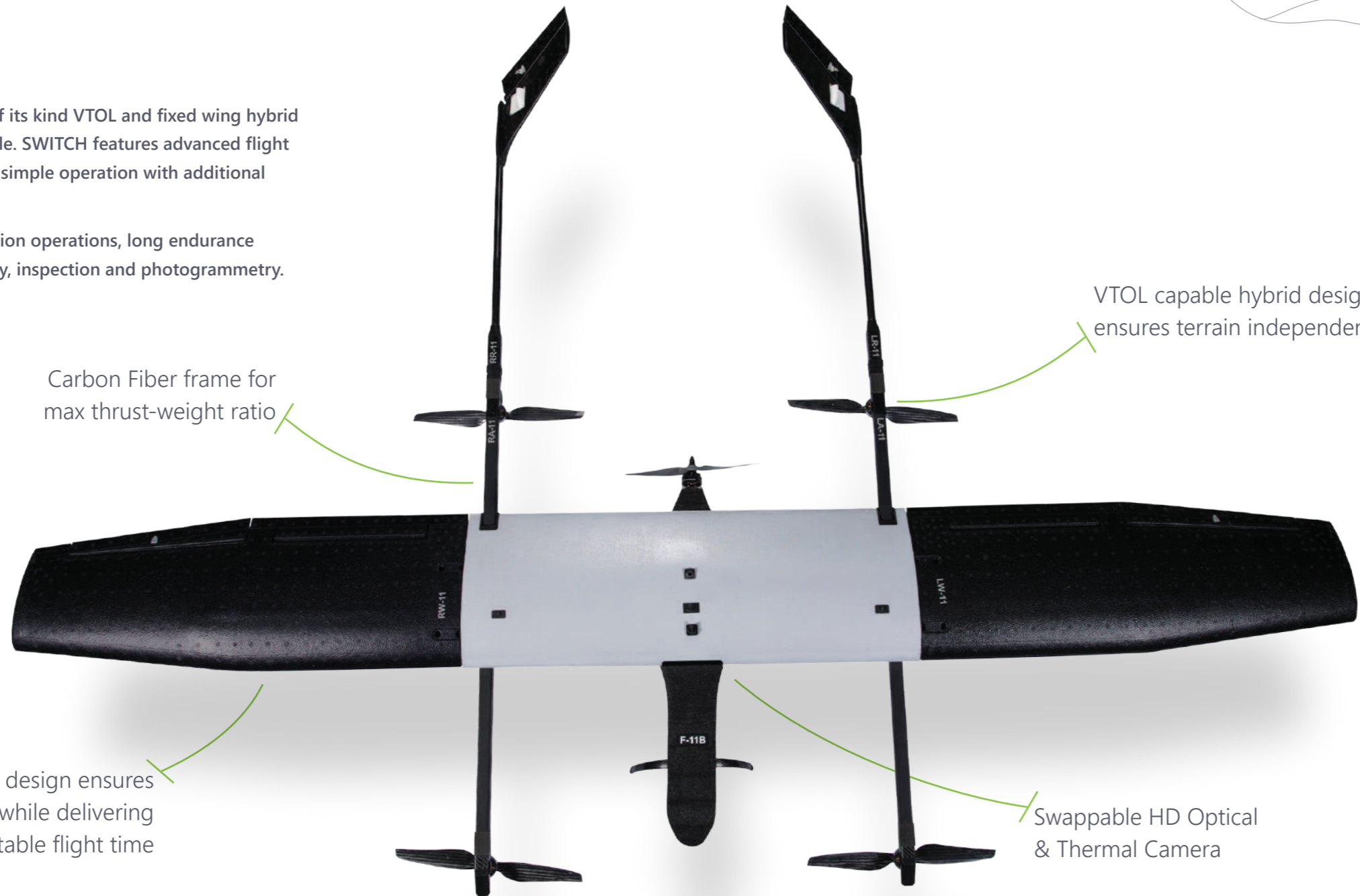
ALL TERRAIN DOMINATOR

Images are for representational purposes only

# About

SWITCH UAV is a first of its kind VTOL and fixed wing hybrid Unmanned Aerial Vehicle. SWITCH features advanced flight time, higher safety and simple operation with additional fail-safe redundancies.

It is used for long duration operations, long endurance surveillance and security, inspection and photogrammetry.



Carbon Fiber frame for max thrust-weight ratio

VTOL capable hybrid design ensures terrain independence

Detachable wing design ensures portability while delivering unbeatable flight time

Swappable HD Optical & Thermal Camera



## Deep HD Optical Zoom

Daylight Surveillance Payload



More than **15 km**  
Operational Range



More than **120 min**  
Flight Time



## 2X Lighter & Man Portable

When compared to the competition

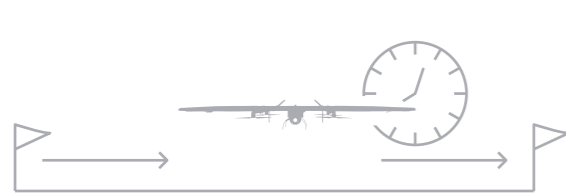


## Over 28X More Linear Coverage

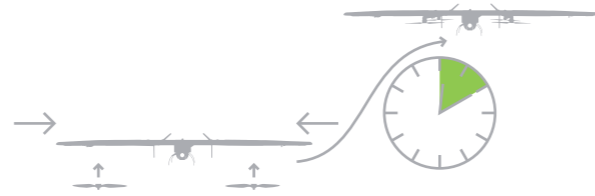
when compared to boots on ground

# Built for all terrain Surveillance

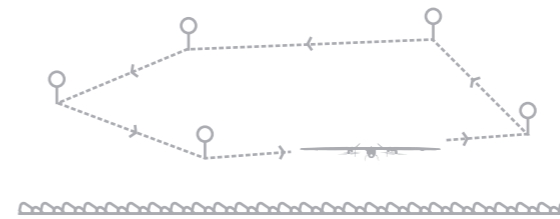
# Features



**Best in Class Area Coverage**  
Mission Area of over **700 Square Kilometers** available from each takeoff point



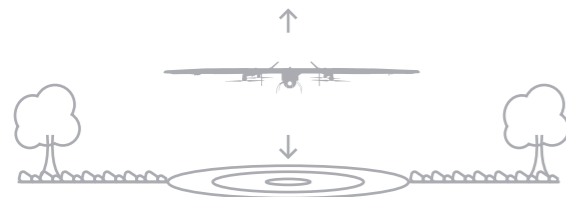
**Less than 10 min Deployment Time**  
User-friendly assembly to conduct surveillance operations faster



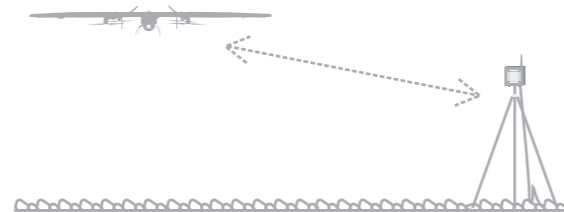
**Waypoint Based Navigation**  
Ensures Switch UAV does the heavy lifting while you focus on outcomes



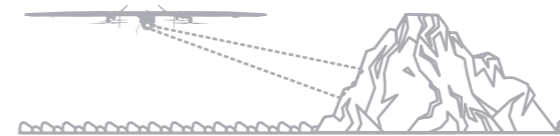
**Certified to Operate in Extreme Temperature**  
Operate with confidence in diverse climates



**VTOL Capable**  
Get unmatched **terrain independence** without the need for traditional runways or launching infrastructure



**Encrypted Communication**  
Secured communication between the GCS and UAV with all videos streamed & stored on the operator's system



**Long Range Target Detection**  
With HD Optical Zoom payload



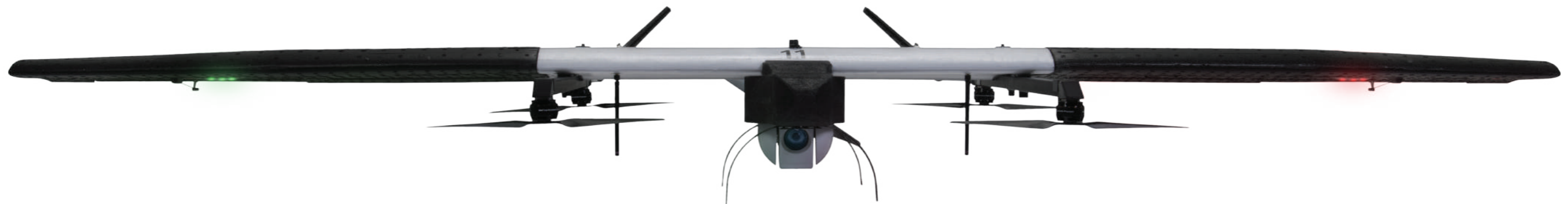
**IP53 Certified**  
Ensuring mission success even in tough conditions



**Robust Build Quality**



**Man-portable**

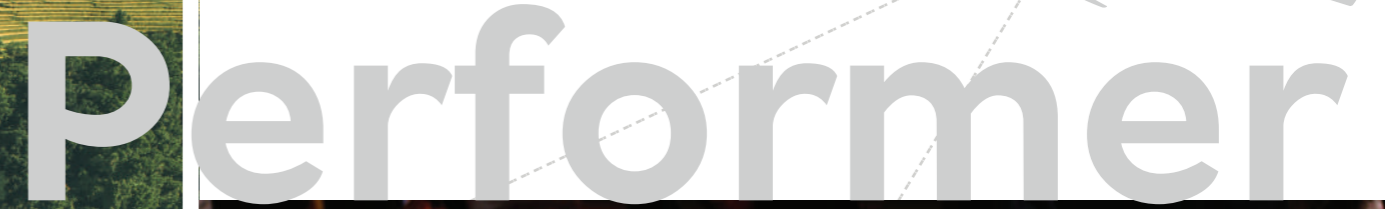


# Every Single Time

# Applications

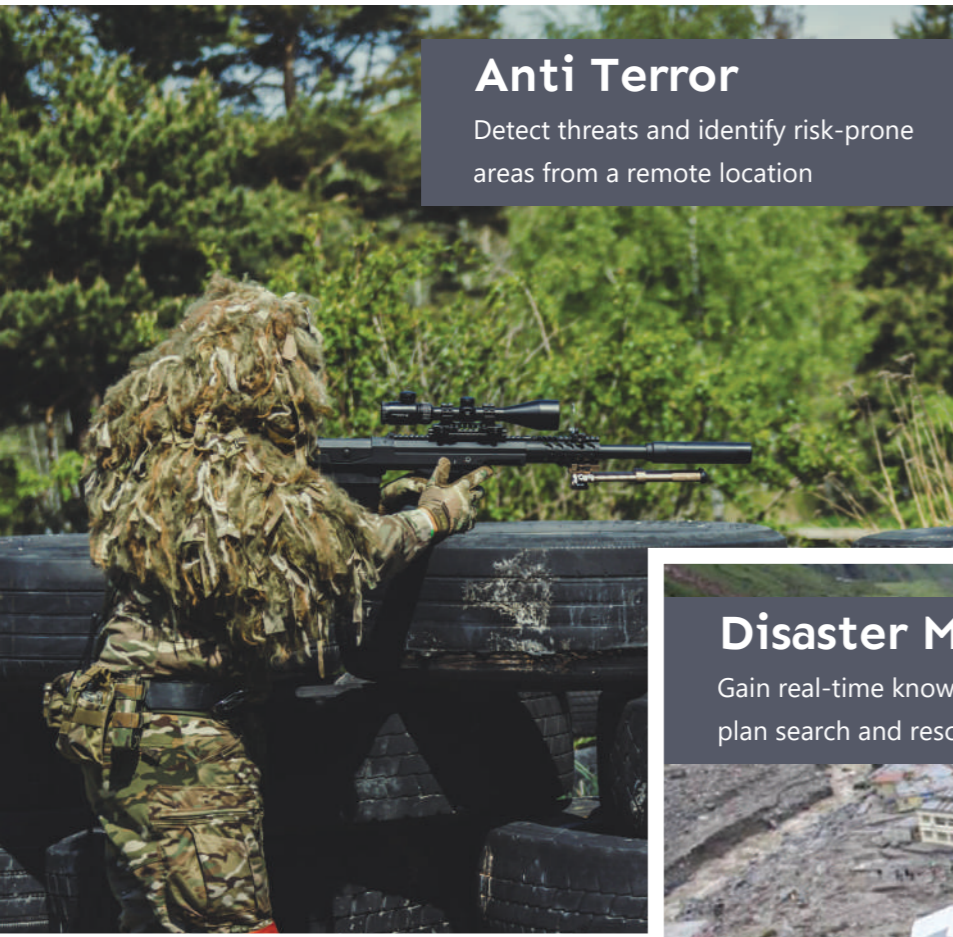
SWITCH UAV is rigorously tested to deliver success across the entire spectrum of security and surveillance missions

# Performer



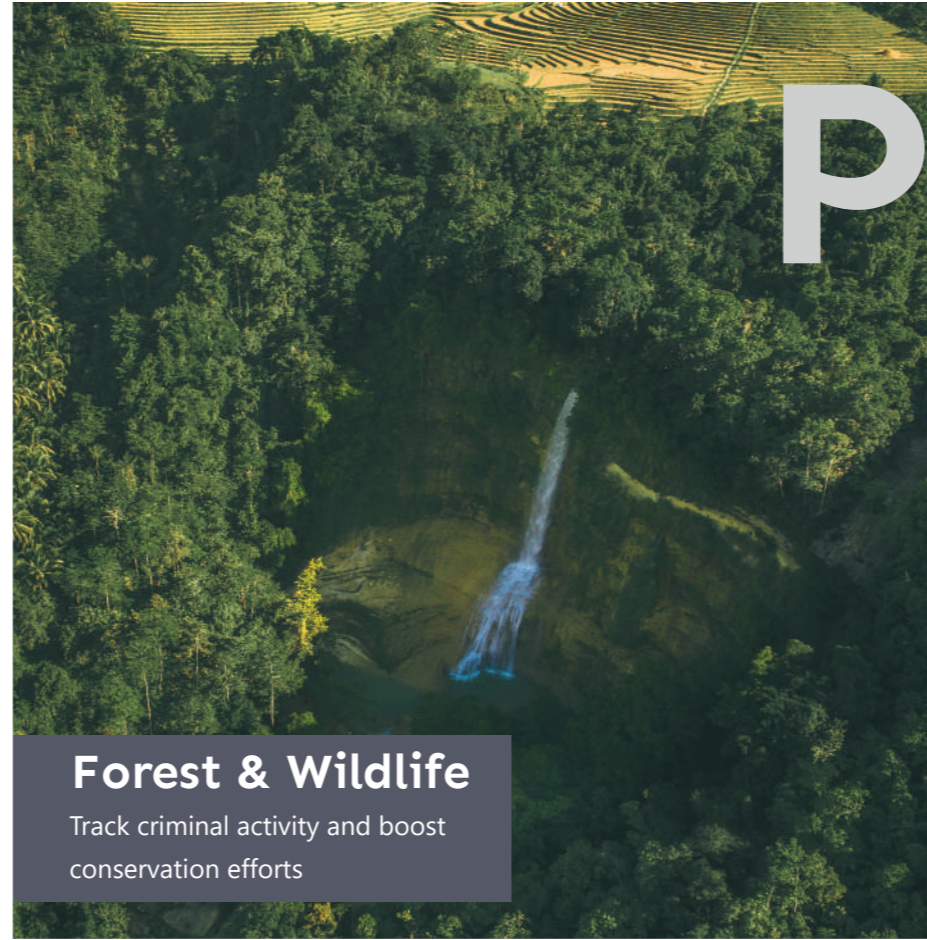
## Anti Terror

Detect threats and identify risk-prone areas from a remote location



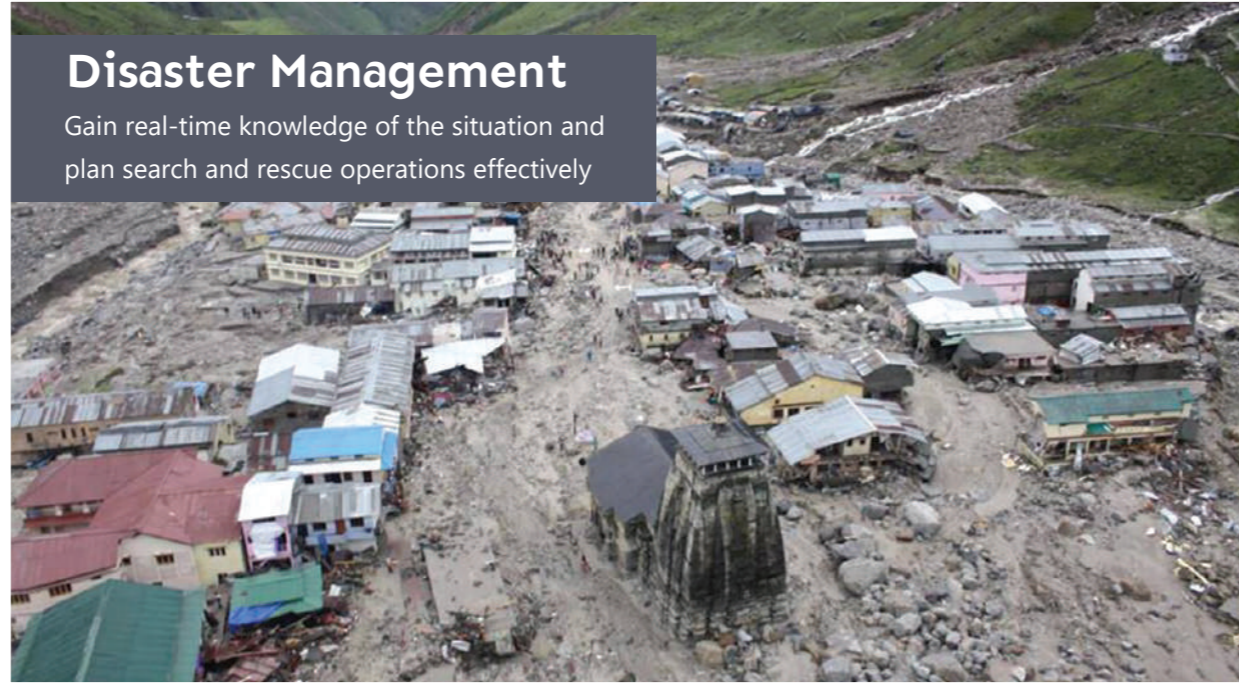
## Forest & Wildlife

Track criminal activity and boost conservation efforts



## Disaster Management

Gain real-time knowledge of the situation and plan search and rescue operations effectively



## Crime Control

Enhance law enforcement with remote situation assessment and crime scene analysis



## ISR Operations

Conduct surveillance and gather actionable intelligence



## Border Security

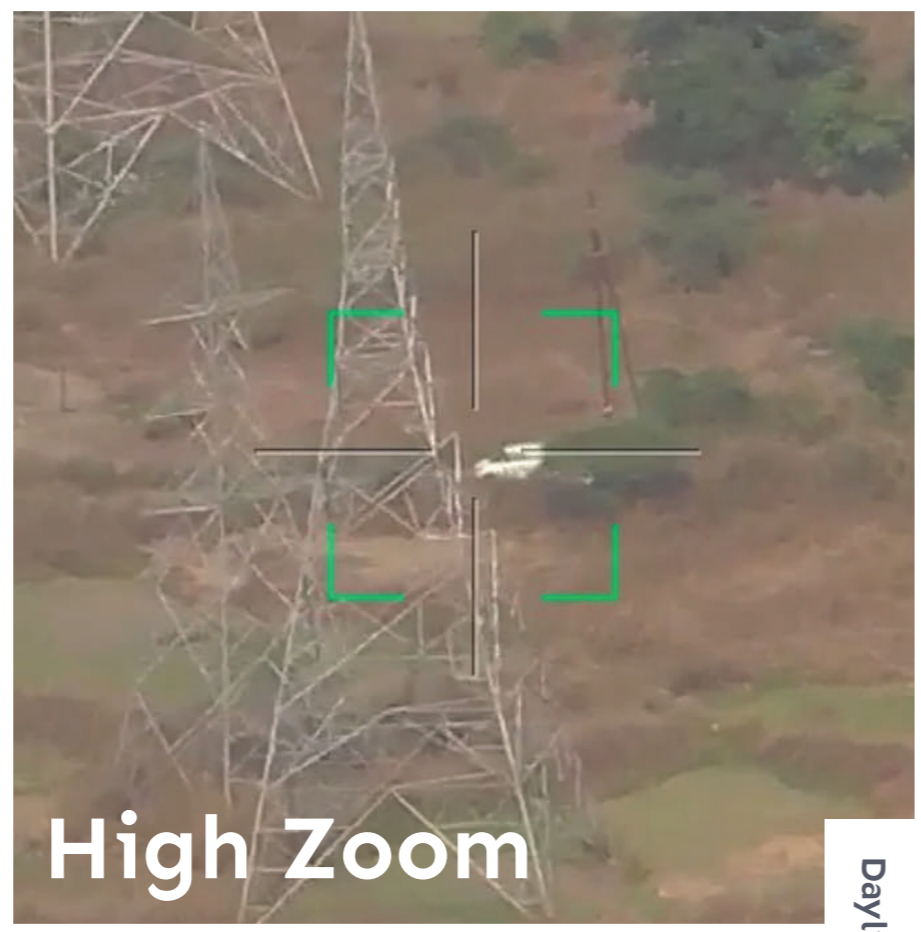
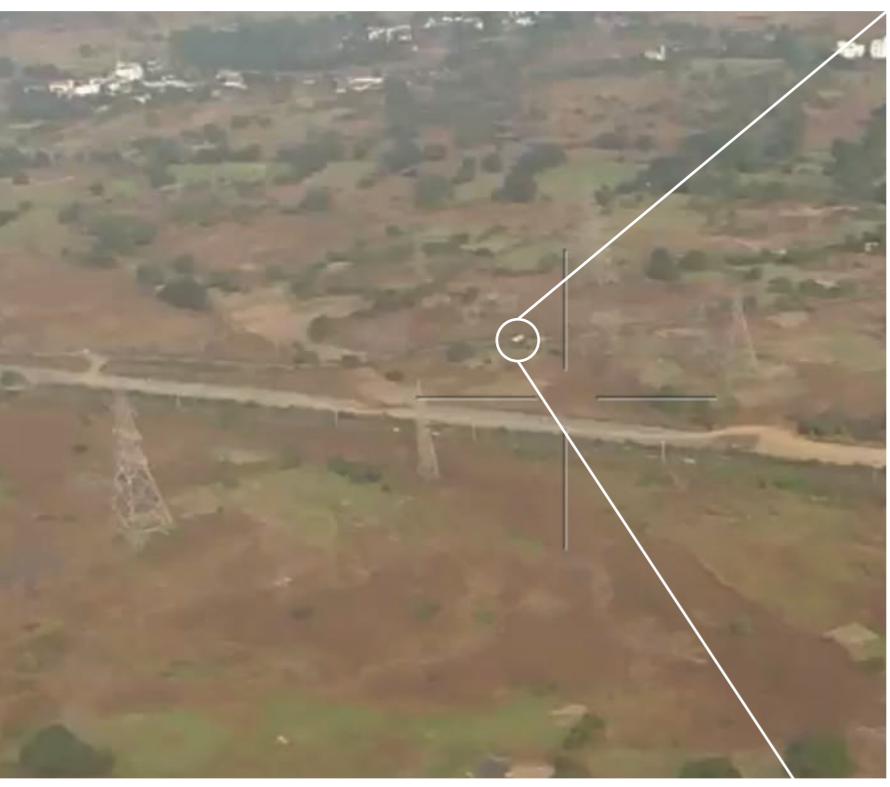
Conduct reconnaissance missions and track illegal activities without risking lives



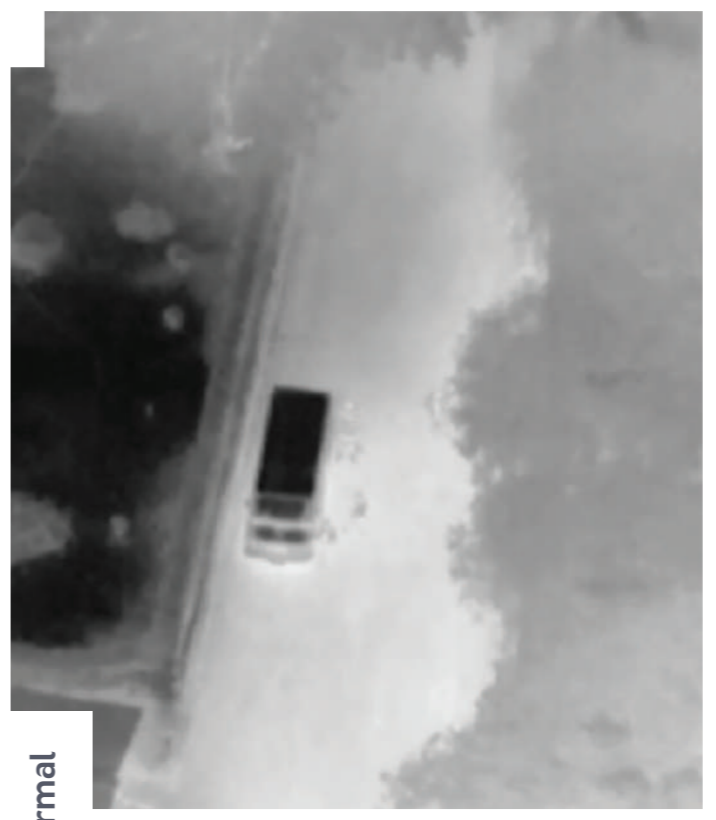
# Real-world Outputs

SWITCH UAV is the force multiplier that saves lives

# Boost Operations



High Zoom



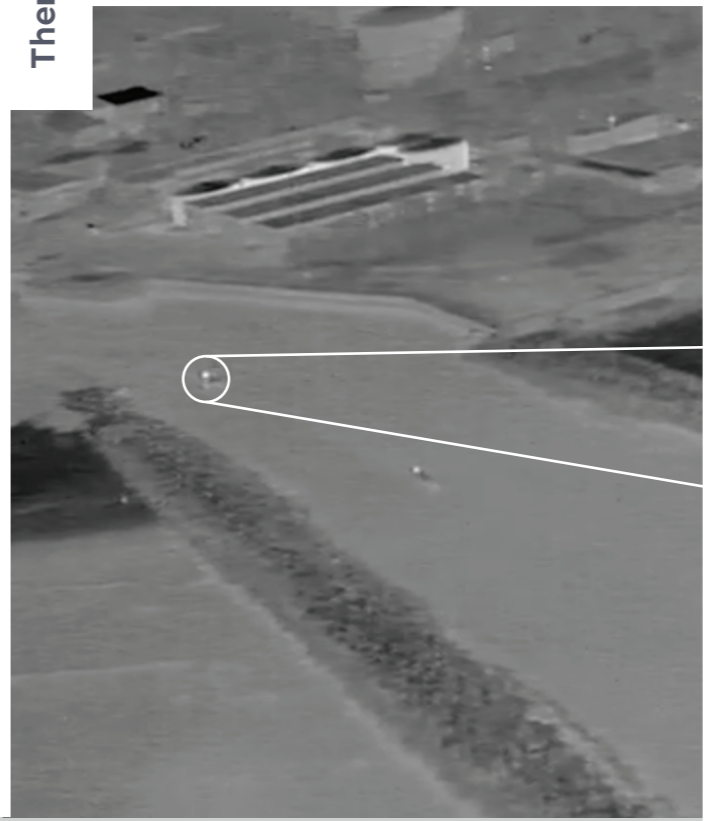
Thermal



Low Temperature



Daylight



Images are for representational purposes only

**ideaForge<sup>®</sup>**

**Email: [business@ideaforge.co.in](mailto:business@ideaforge.co.in)**

**Call: +91 91520 30613**

**[www.ideaforge.co.in](http://www.ideaforge.co.in)**

